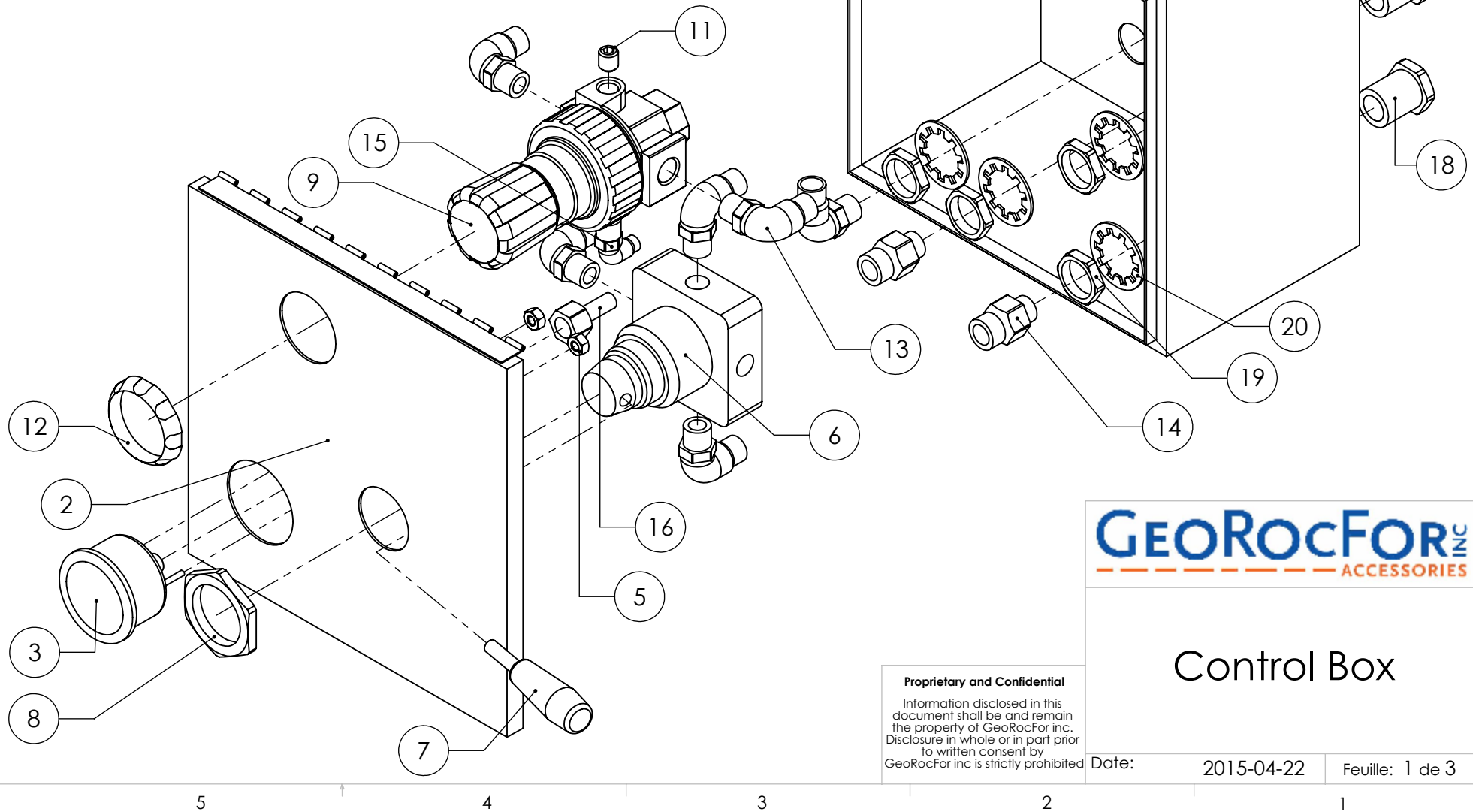


#	DESCRIPTION	PIECE NUMBER	QTE
1	Box 10"x10"x6"	EJ 10106	1
2	Box Cover	EJ 10106	1
3	Plate Mount Dial	E 1409 UC	1
4	Dial Mount	E 1409 UC	1
5	Dial Nut	E 1409 UC	2
6	Valve 4/3 close center 3/8" NPT	VH 310-N03	1
7	Valve Handle 4/3	VH 310-N03	1
8	Nut for Valve 4/3	VH 310-N03	1
9	Regulator 3/8" 125 PSI	06R213AC	1
11	Plug 1/4 NPT for Regulator	06R213AC	1
12	Regulator Nut	P 04082	1
13	Elbow 1/2 tube @ 3/8" NPT swivel	12-447-0738	6
14	1/2 tube @ 3/8" NPT male	12-425-0738	2
15	Elbow 1/4 tube @ 1/4" NPT male	12-447-0428	1
16	1/4 tube @ 1/4" NPT female	12-426-0428	1
18	Fitting 1/2" NPT male @ 3/8" NPT fem.	207 ACBH-6	4
19	Nut 1/2 NPT	207 ACBH-6	4
20	Washer 1"	internal tooth-lock washers_ai	4



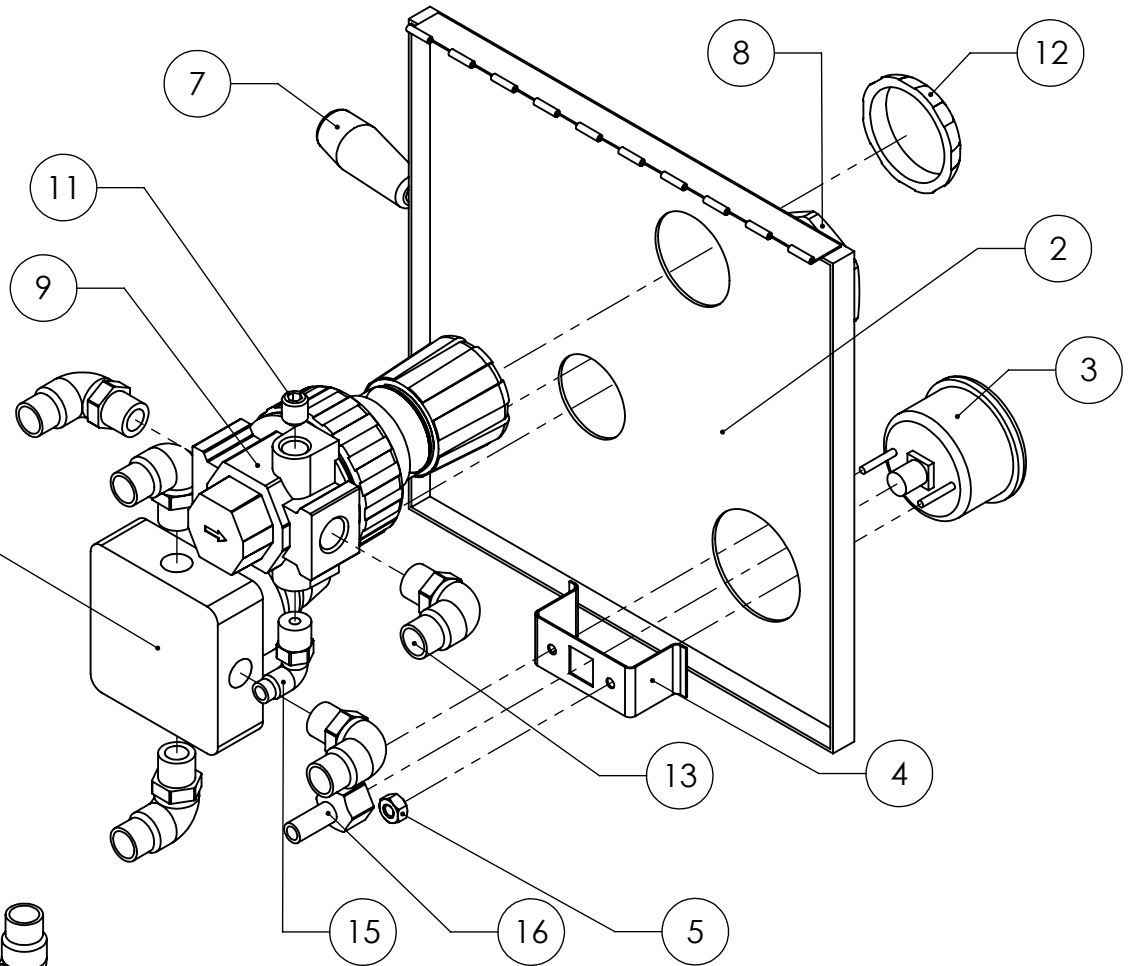
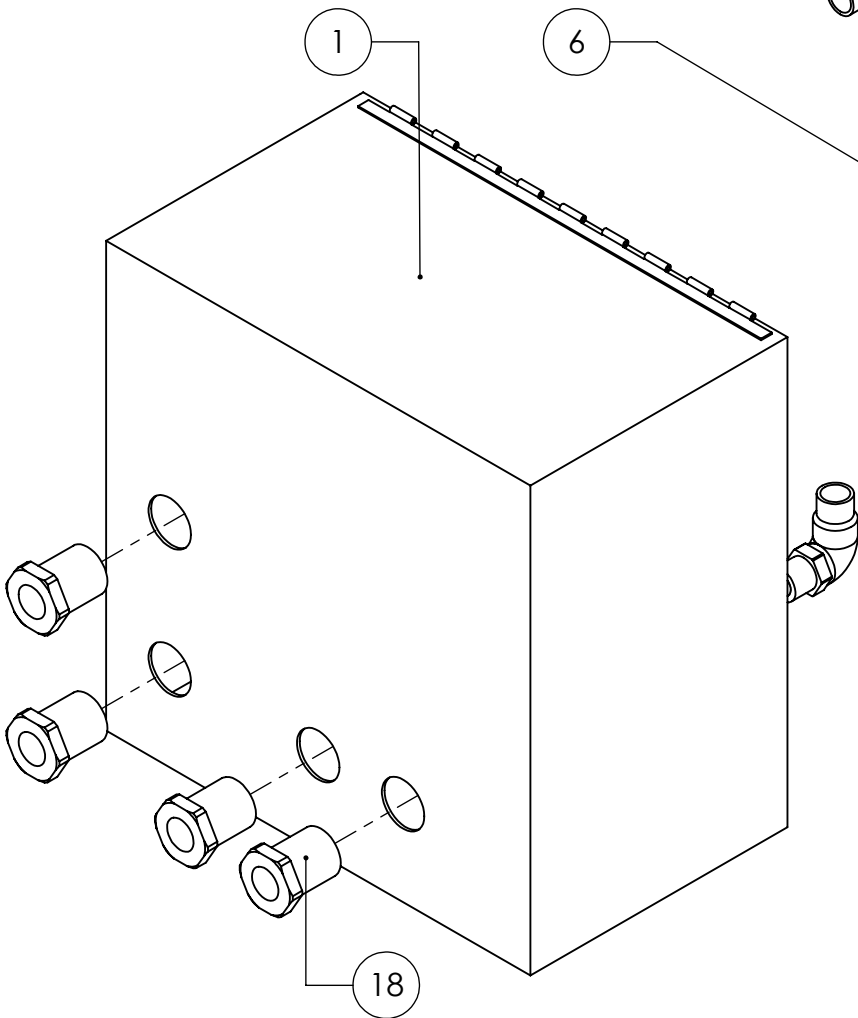
GEOROC FOR INC
ACCESSORIES

Control Box

Proprietary and Confidential
Information disclosed in this document shall be and remain the property of GeoRocFor inc. Disclosure in whole or in part prior to written consent by GeoRocFor inc is strictly prohibited

Date: 2015-04-22 Feuille: 1 de 3

#	DESCRIPTION	PIECE NUMBERB2	QTE
1	Box 10"x10"x6"	EJ 10106	1
2	Box Cover	EJ 10106	1
3	Plate Mount Dial	E 1409 UC	1
4	Dial Mount	E 1409 UC	1
5	Nut for Dial	E 1409 UC	2
6	Valve 4/3 close center 3/8" NPT	VH 310-N03	1
7	Valve Handle 4/3	VH 310-N03	1
8	Nut for Valve 4/3	VH 310-N03	1
9	Regulator 3/8" 125 PSI	06R213AC	1
11	Plug 1/4 NPT for Regulator	06R213AC	1
12	Regulator Nut	P 04082	1
13	Elbow 1/2 tube @ 3/8" NPT swivel	12-447-0738	6
14	1/2 tube @ 3/8" NPT male	12-425-0738	2
15	Elbow 1/4 tube @ 1/4" NPT male	12-447-0428	1
16	1/4 tube @ 1/4" NPT female	12-426-0428	1
18	Fitting 1/2" NPT male @ 3/8" NPT fem.	207 ACBH-6	4
19	Nut 1/2 NPT	207 ACBH-6	4
20	Washer 1"	internal tooth-lock washers .ai	4



Control Box

Proprietary and Confidential
Information disclosed in this document shall be and remain the property of GeoRocFor inc. Disclosure in whole or in part prior to written consent by GeoRocFor inc is strictly prohibited

Date: 2015-04-22 Feuille: 2 de 3